

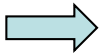
HKSUM CME program January 2010

Sponsored by Medison company

Case

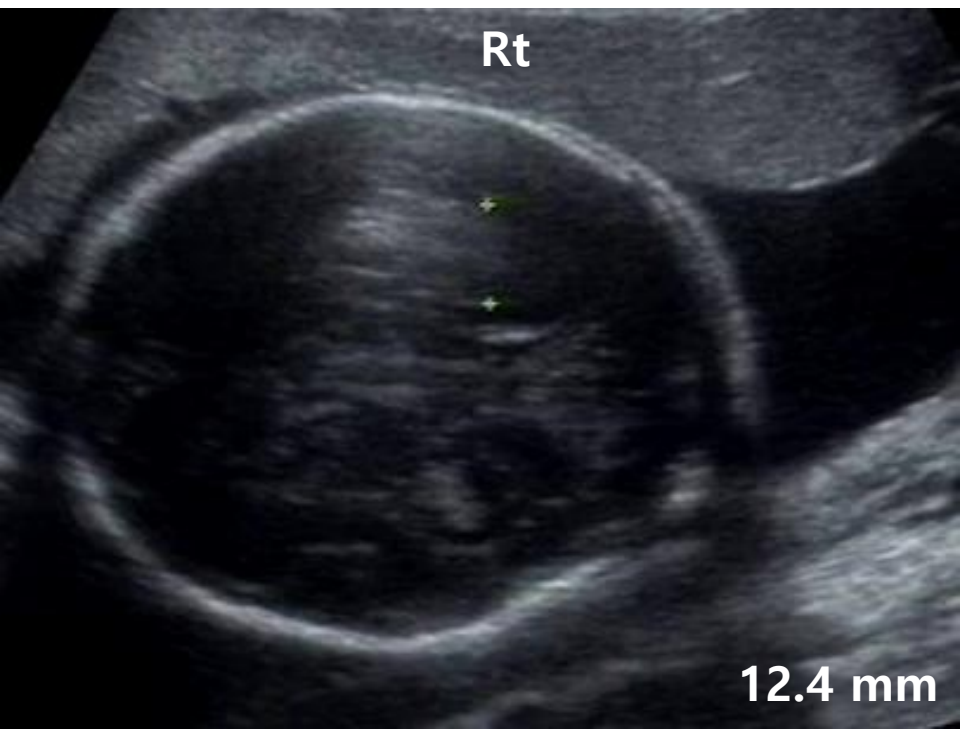
A prenatal detailed ultrasound examination was performed at 24 weeks' gestation.

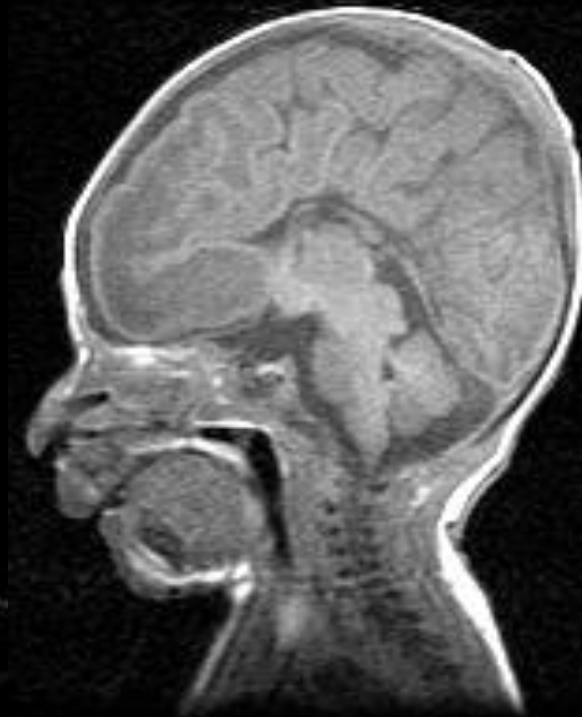
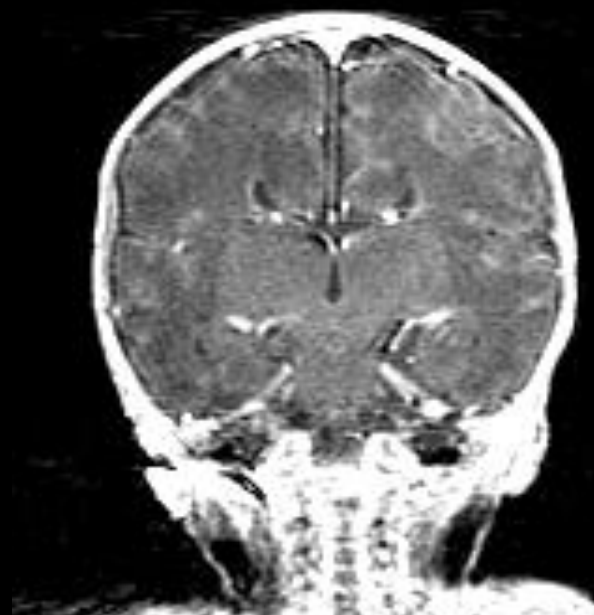
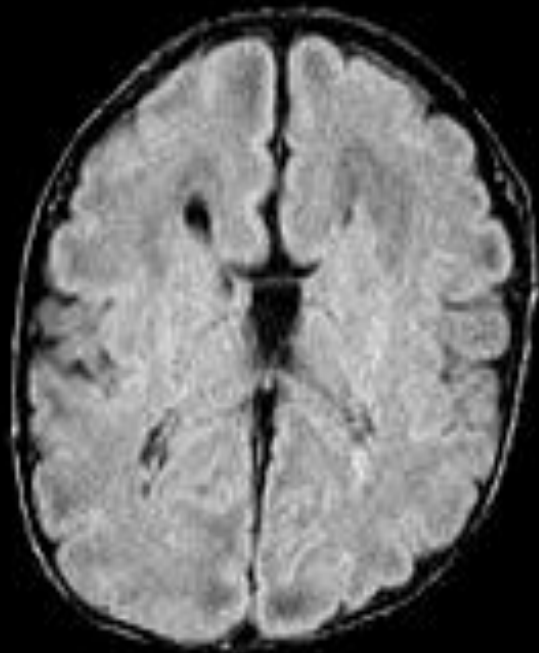
After birth, MRI of the neonatal brain was performed. For comparison, MRI of normal brain was also shown.



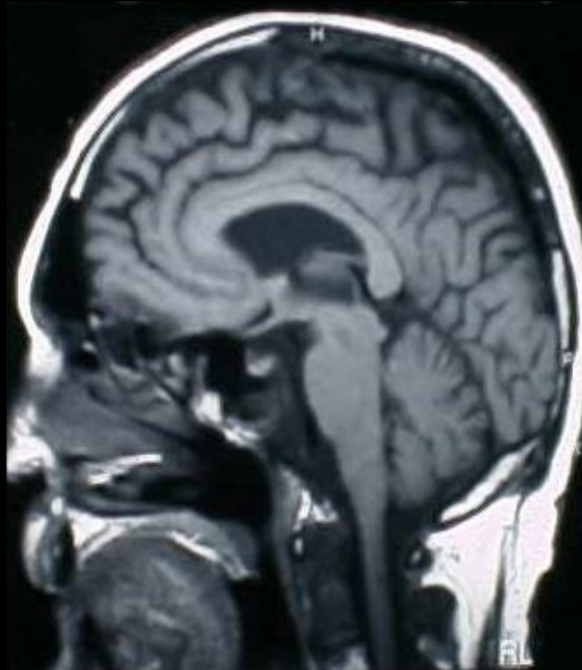
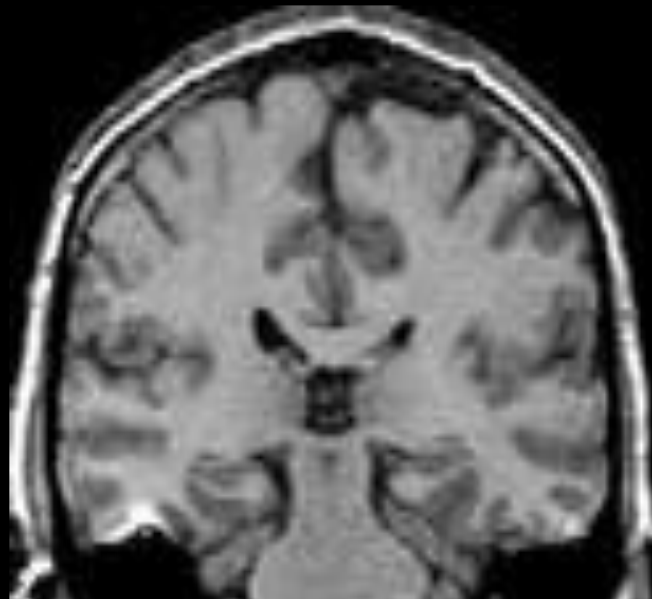
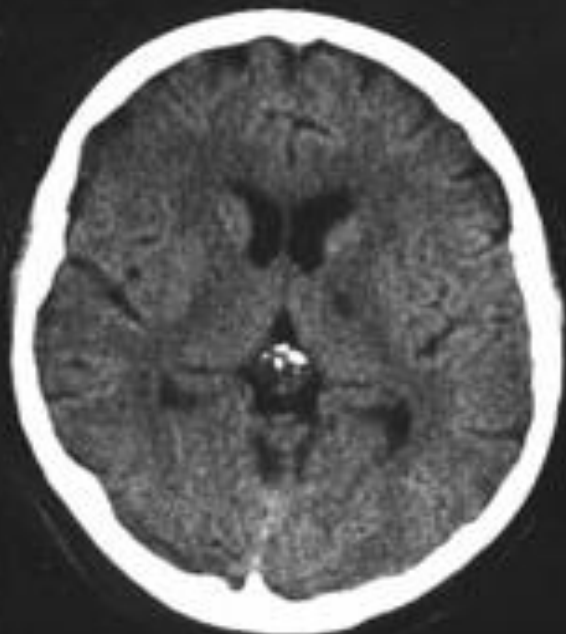
LMP	2005-11-27	Estab. Due Date	2006-09-03
GA(LMP)	24w4d	Average US GA	25w1d
EDD(LMP)	2006-09-03	EDD(Average US GA)	2006-08-30
EFW Hadlock4	735g	GA(EFW)	24w4d
Percentile(EFW)	49.70	SD(EFW)	-0.01

Fetal Biometry		1	2	3	Last	G.A.
BPD	Hadlock	6.67			6.67 cm	26w6d ± 15d
HC	Hadlock	23.68			23.68 cm	25w5d ± 15d
AC	Hadlock	19.32			19.32 cm	24w0d ± 15d
FL	Hadlock	4.60			4.60 cm	25w2d ± 15d
FTA	Osaka				29.70 cm ²	23w6d





Postnatal Brain MRI



Normal Brain MRI

Questions

1. What are the sonographic abnormalities?
2. What are the MRI abnormalities?
3. What is the likely diagnosis?
4. What will be the prognosis?