

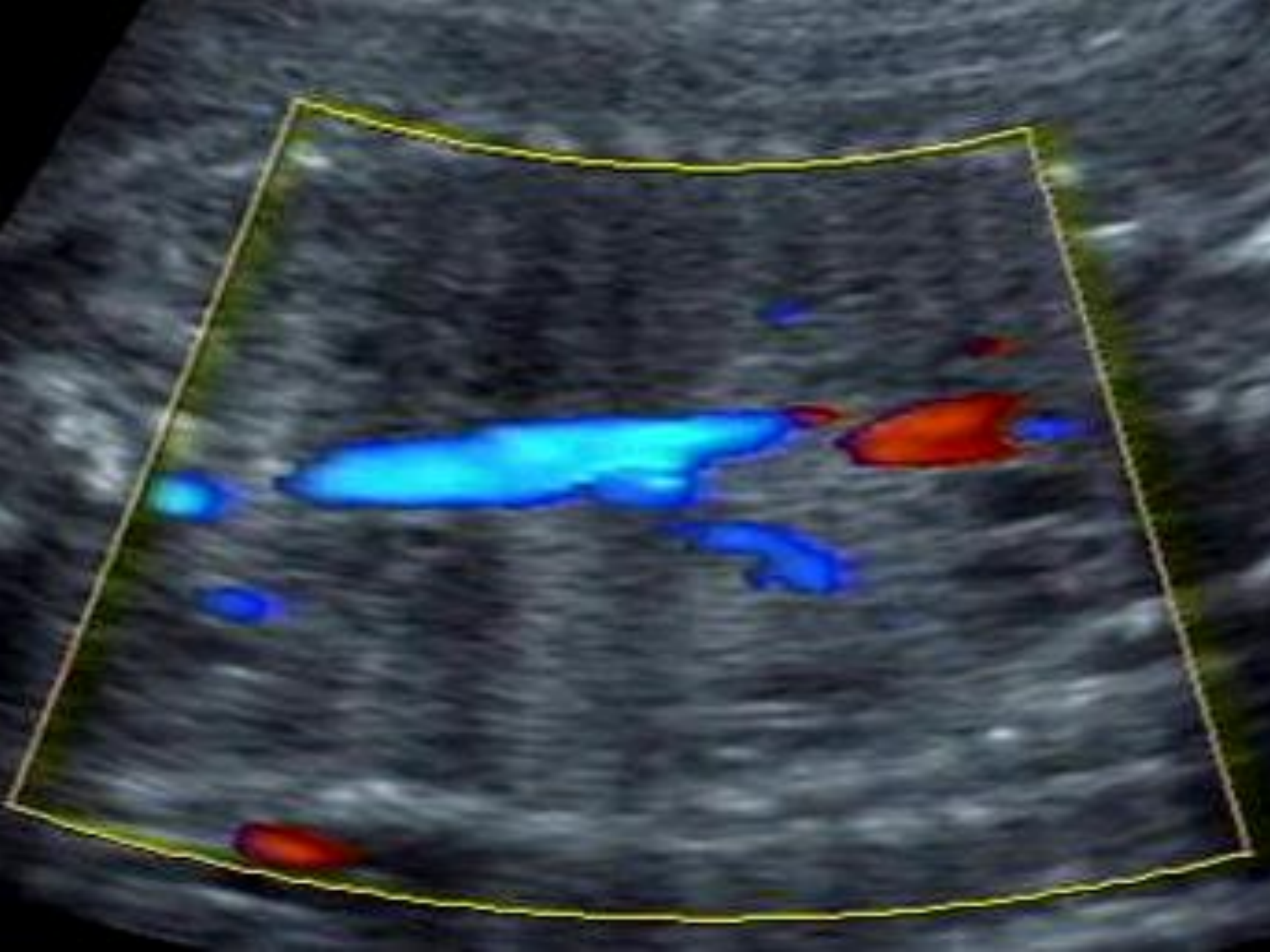
CME 2009 September

**Hong Kong Society for
Ultrasound in Medicine**

Prenatal ultrasonography at 27 weeks ' gestation

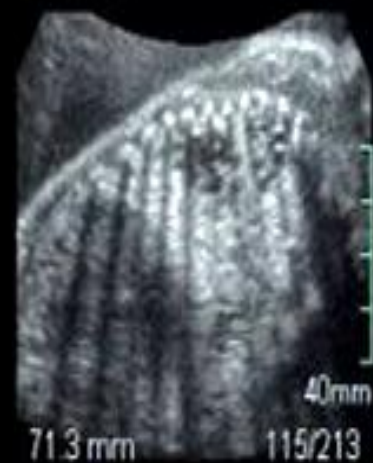
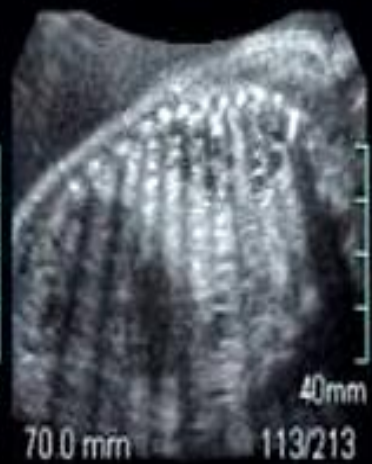
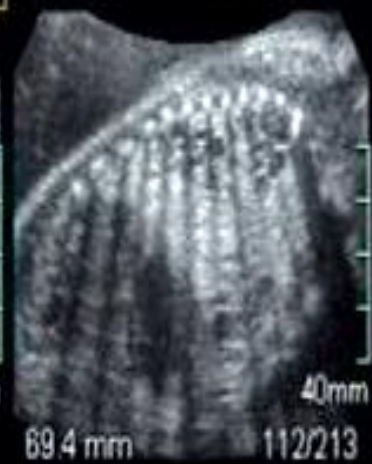
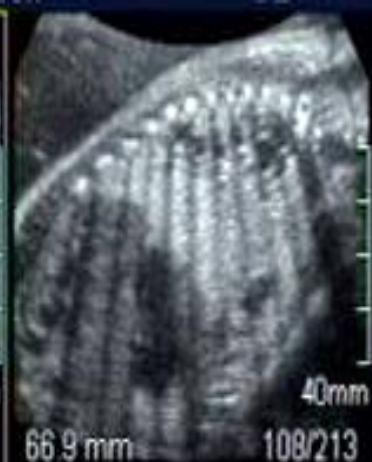














Questions

- 1. What is the likely diagnosis?
- 2. Why?
- 3. What are the differential diagnosis?
- 4. What are the images on slide 6-8?
and what are their additional benefits?